



FILM INSIDE OBJECTS

1. INTRODUCTION

For those of you who have watched the Harry Potter films, you have perhaps seen people moving around inside cards, wanted posters (Sirius Black) or inside newspapers. This is of course not magic, but movie tricks. In this tutorial, VE will show you how to make similar effects and how you can try to do some magic.

2. PREPARATIONS

First of all, you need some picture and video editing equipment that can handle transparency, use of chroma key, color picking, and multiple timelines and tilting – just to mention some. In this tutorial VE have used Adobe Photoshop and Adobe Premiere Pro while the whole thing is assembled in Pinnacle Studio.

You can use virtually anything to “frame” your movie – or lay your movie upon. In this tutorial however VE has focused on the use of normal playing cards as frame. If you want to lay your film on top – some of the principles remain the same while you have to alter some of the procedure steps in some cases.

3. STARTING

But let's get started. As you can see from Fig. 1, VE has scanned a normal card (that is VE has scanned all the aces, kings and knights). Thereafter the cards are adjusted so that that they are horizontal (Fig. 2).



Fig. 1

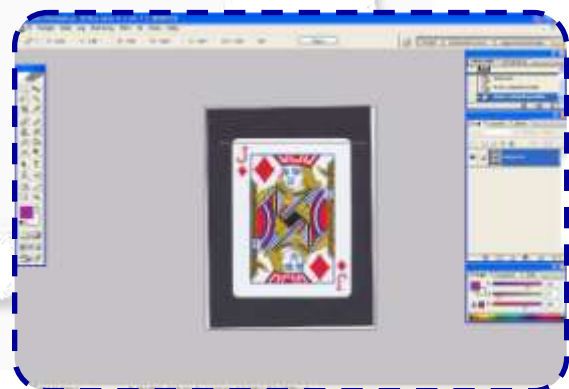


Fig. 2

Around the image VE has used a filling with a color that later will be removed (Fig. 3 and red arrow). So make a note of your RGB-number (color) and choose a color that “stands out”. Green or blue is quite common when using the chroma key effect. After the right color is applied, you simply use the eraser tool (marked with red arrow) and make a “hole” in the card where your film will be placed.

There are quite a few options you have when doing this. Try a little bit to find what you are after. And of course, with Photoshop you can have your original card as one layer, and all the different layers with different eraser results as independent layers.



When saving your image, you should keep this in mind. Which program are you going to use, and which formats does it support. Since VE is using Premiere, VE can use the Photoshop format (as you can see from Fig. 4). Other options are of course GIF and TIFF since you need to keep the transparency (TIFF is preferable in VE's experience).

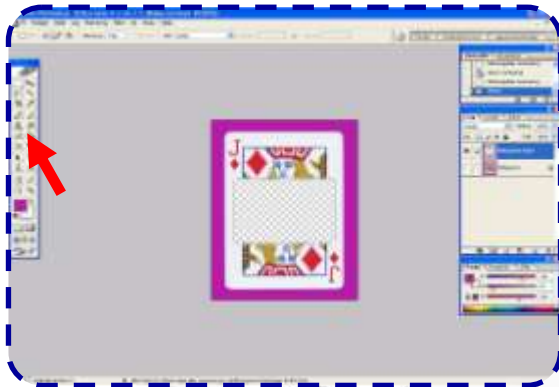


Fig. 3



Fig. 4

4. IMPORTING THE IMAGES

Now it's time to import all the images. VE is using Premiere and the images are made with Photoshop, so VE can choose which layer to import – or all layers (Fig. 5). Depending on your settings and format, you'll see all the cards displayed on the timeline. In this tutorial VE has used a basic 16:9 format. And as you'll see, the cards are surrounded by the pink colour and the rest is black – and in the middle you'll have a blank space. Here you can also alter the size, but remember to keep the same settings for all your images (Fig. 6).



Fig. 5



Fig. 6

5. IMPORTING THE FILM

Make sure you have added your movies (background for your cards) to your asset panel (imported them into your project). Drag your movie and place the movie behind the card and adjust the position and scale (Fig 7). You can adjust the size if you please and just show a part of the movie.



Fig. 7

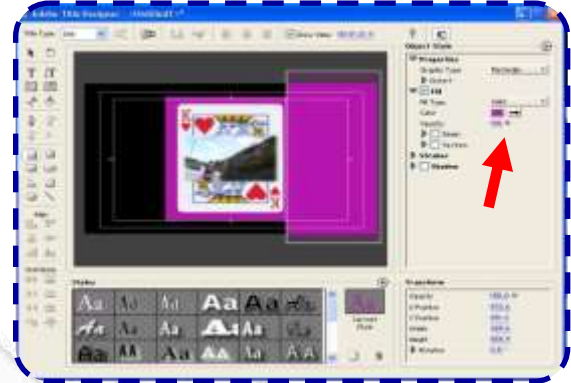


Fig. 8

6. ADJUSTING THE CLIP

In order to make the clip suitable for later effects you'll need to cover the outskirts of the card with colour. The point here is to use the same color (red arrow) as you used within Photoshop when adding filling (Fig. 8). Thereafter is just a matter of using the title editor and boxes on all the sides so that the only object is visible – is the card with the film inside.

Another tip is to adjust some of the settings, for instance set “Remove Flicker” to make the image more stable (Fig. 9).

When you have checked this, you simply copy this title onto all the other clips (now you understand why it is important to have the same settings?). This will save you a lot of time and make all the clips look the same. Afterwards you export the individual clips as a movie clip – one card is one clip. Mind that you have the same length for the clips.



Fig. 9

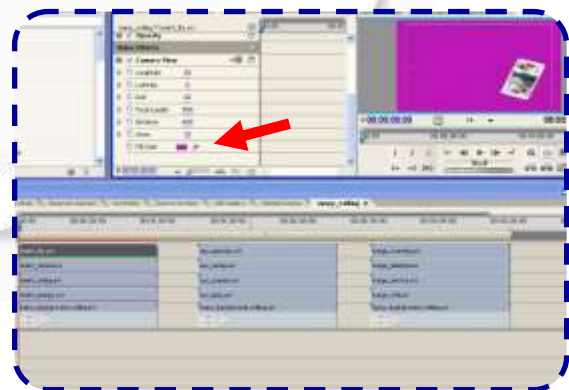


Fig. 10

7. FINALIZING THE CLIP

In this tutorial, VE has chosen to have four cards with film inside. To lay these out, there is some work left. The first is to choose your background and add the clips you have made.

In Fig. 10 you can see that there is a background added underneath and the four movie clips containing the cards laid out on top.



Now, VE want to spread the cards out and give them a slight 3-D effect, so that all four cards are visible. The first thing to do is to adjust the size of the clip and apply the camera view effect. With the camera view effect you can deceive angles, rotation, focal length and so on. One thing that's of major importance is to set the filling color (red arrow in Fig. 10) as the same as you have previously used.

The last thing to do in order to have your "deck of cards" displayed is to use the chroma key effect and remove the pink colour from the clip. And when that done, and you have displayed the cards the way you want – the movie is ready for export. Save the movie in the right format. As you can see from Fig. 11 there is no background used on this clip. The opposite as with Fig. 12 – where a background is added before the movie is exported.



Fig. 11

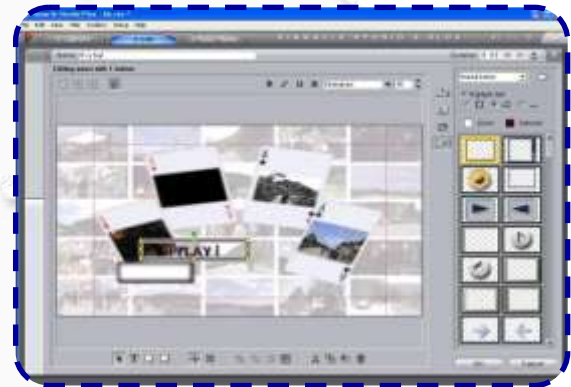


Fig. 12

8. USING THE CLIP

You can of course import the sequence as it is into Adobe Encore DVD, but if you don't want to use (or find it too expensive....) that program for your DVD-making, there are other options. Pinnacle Studio, for instance, will do the job. Simply import the movie and use it as background for your DVD menu. How to accomplish that is very easy, simply go to the title editor, choose an image or text and set this a button. The sequence where the title is placed will be converted into a DVD menu.

9. MAKING THE DVD

In Fig. 12 and Fig. 13, VE has placed a background for the buttons first, used normal text and made it into a normal button. Remember to check your active and selected colors.

VE has not yet figured out how to use the imported movie clips as buttons.....

From Fig. 14, you can see how it looks. The text works as buttons with a box underneath and the imported movie clip with the deck of cards as background.

VE has not tried to have a movie clip on top of a card. The principles remain the same however. And there might be other options..... But you might have to use the chroma key a bit more if you place a clip on top and not underneath.



Fig. 13



Fig. 14

10. CONCLUSION

This isn't as difficult as it might look. You need some semi-professional software to get it right – and some testing to see what works and what don't. The result though is very cool indeed – at least VE thinks that. Remember transparency and chroma key and you'll be well under way. ■■